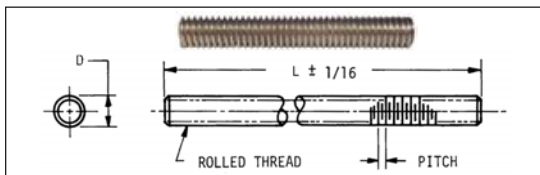


STAINLESS THREADED STOCK

**INCH
METRIC**



Material: 300 Series Stainless Steel

Other thread sizes, lengths and material available on request.

Discounts available depending on quantity.

INCH SIZES

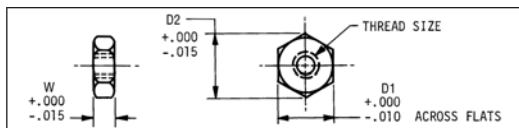
| Catalog Number | Thread | D | Pitch | L | Catalog Number | Thread | D | Pitch | L |
|----------------|---------|------|-------|----|----------------|--------|-----|-------|----|
| DJS-P1-1 | #2-56 | .086 | .018 | 12 | DJS-P1-10 | 3/8-16 | 3/8 | .062 | 24 |
| DJS-P1-2 | #4-40 | .112 | .025 | 12 | DJS-P1-11 | 3/8-32 | 3/8 | .031 | |
| DJS-P1-3 | #6-32 | .138 | .031 | | DJS-P1-12 | 1/2-13 | 1/2 | .077 | |
| DJS-P1-4 | #8-32 | .164 | .031 | | DJS-P1-13 | 1/2-20 | 1/2 | .050 | |
| DJS-P1-5 | #10-24 | .190 | .042 | 16 | DJS-P1-14 | 5/8-11 | 5/8 | .091 | 36 |
| DJS-P1-6 | #10-32 | .190 | .031 | | DJS-P1-15 | 5/8-18 | 5/8 | .056 | |
| DJS-P1-7 | 1/4-20 | 1/4 | .050 | | DJS-P1-16 | 3/4-10 | 3/4 | .100 | |
| DJS-P1-8 | 1/4-28 | 1/4 | .036 | 24 | DJS-P1-17 | 3/4-16 | 3/4 | .062 | |
| DJS-P1-9 | 5/16-18 | 5/16 | .055 | | DJS-P1-18 | 1"-8 | 1" | .125 | |
| | | | | | DJS-P1-19 | 1"-14 | 1" | .071 | |

METRIC SIZES

ORDER BY CATALOG NUMBER

| Catalog Number | Thread | Pitch | L | Catalog Number | Thread | Pitch | L |
|----------------|------------|-------|-------|----------------|------------|-------|--------|
| DJS-P2-1 | M4 x 0,70 | 0,70 | 250mm | DJS-P2-8 | M16 x 2,00 | 2,00 | 1000mm |
| DJS-P2-2 | M5 x 0,80 | 0,80 | | DJS-P2-9 | M18 x 2,50 | 2,50 | |
| DJS-P2-3 | M6 x 1,00 | 1,00 | 500mm | DJS-P2-10 | M20 x 2,50 | 2,50 | 1000mm |
| DJS-P2-4 | M8 x 1,25 | 1,25 | | DJS-P2-11 | M22 x 2,50 | 2,50 | |
| DJS-P2-5 | M10 x 1,50 | 1,50 | 500mm | DJS-P2-12 | M24 x 3,00 | 3,00 | 1000mm |
| DJS-P2-6 | M12 x 1,75 | 1,75 | | DJS-P2-13 | M27 x 3,00 | 3,00 | |
| DJS-P2-7 | M14 x 2,00 | 2,00 | 500mm | DJS-P2-14 | M30 x 3,50 | 3,50 | 1000mm |

HEXAGON NUTS STAINLESS STEEL



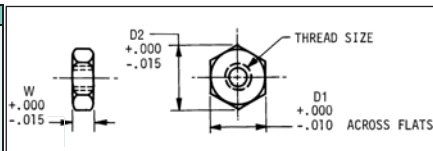
INCH SIZES

| Tap | D1 | D2 | W | Catalog Number | Tap | D1 | D2 | W | Catalog Number |
|----------|------|------|------|----------------|---------|-------|------|------|----------------|
| #000-120 | 3/32 | .109 | .050 | DJS-Q1-1 | #8-32 | 11/32 | .397 | .130 | DJS-Q1-8 |
| #00-96 | 3/32 | .109 | .050 | DJS-Q1-2 | #10-32 | 3/8 | .433 | .130 | DJS-Q1-9 |
| #0-80 | 5/32 | .180 | .050 | DJS-Q1-3 | #10-24 | 3/8 | .433 | .130 | DJS-Q1-10 |
| #1-72 | 5/32 | .180 | .050 | DJS-Q1-4 | 1/4-20 | 7/16 | .505 | .193 | DJS-Q1-11 |
| #2-56 | 3/16 | .217 | .066 | DJS-Q1-5 | 5/16-18 | 1/2 | .577 | .273 | DJS-Q1-12 |
| #4-40 | 1/4 | .289 | .098 | DJS-Q1-6 | 5/16-24 | 1/2 | .577 | .273 | DJS-Q1-13 |
| #6-32 | 5/16 | .361 | .114 | DJS-Q1-7 | 3/8-16 | 9/16 | .650 | .337 | DJS-Q1-14 |
| | | | | | 3/8-24 | 9/16 | .650 | .337 | DJS-Q1-15 |

METRIC SIZES

Dimensions in millimeters

| Thread Size | D1 | D2 | W | Catalog Number |
|-------------|------|------|-----|----------------|
| M1.6 | 3,2 | 3,5 | 1,3 | DJS-M4-1 |
| M2 | 4,0 | 4,4 | 1,6 | DJS-M4-2 |
| M3 | 5,5 | 6,0 | 2,4 | DJS-M4-3 |
| M4 | 7,0 | 7,7 | 3,2 | DJS-M4-4 |
| M5 | 8,0 | 8,8 | 4,0 | DJS-M4-5 |
| M6 | 10,0 | 11,1 | 5,0 | DJS-M4-6 |
| M8 | 13,0 | 14,4 | 6,5 | DJS-M4-7 |
| M10 | 17,0 | 18,9 | 8,0 | DJS-M4-8 |



Please inquire for unlisted sizes.